



APS

Maynard H. Jackson Cluster
Community Meeting
January 23, 2017

Follow Along:

www.atlantapublicschools.us/schoolchanges

Select: "Jackson Cluster Presentation"

Agenda

Welcome & Introductions

Purpose of Meeting

State of Cluster Summary

Proposal for School Changes in Jackson Cluster

Q&A

Agenda

Welcome & Introductions

Purpose of Meeting

State of Cluster Summary

Proposal for School Model Changes in Jackson Cluster

Q&A



APS is

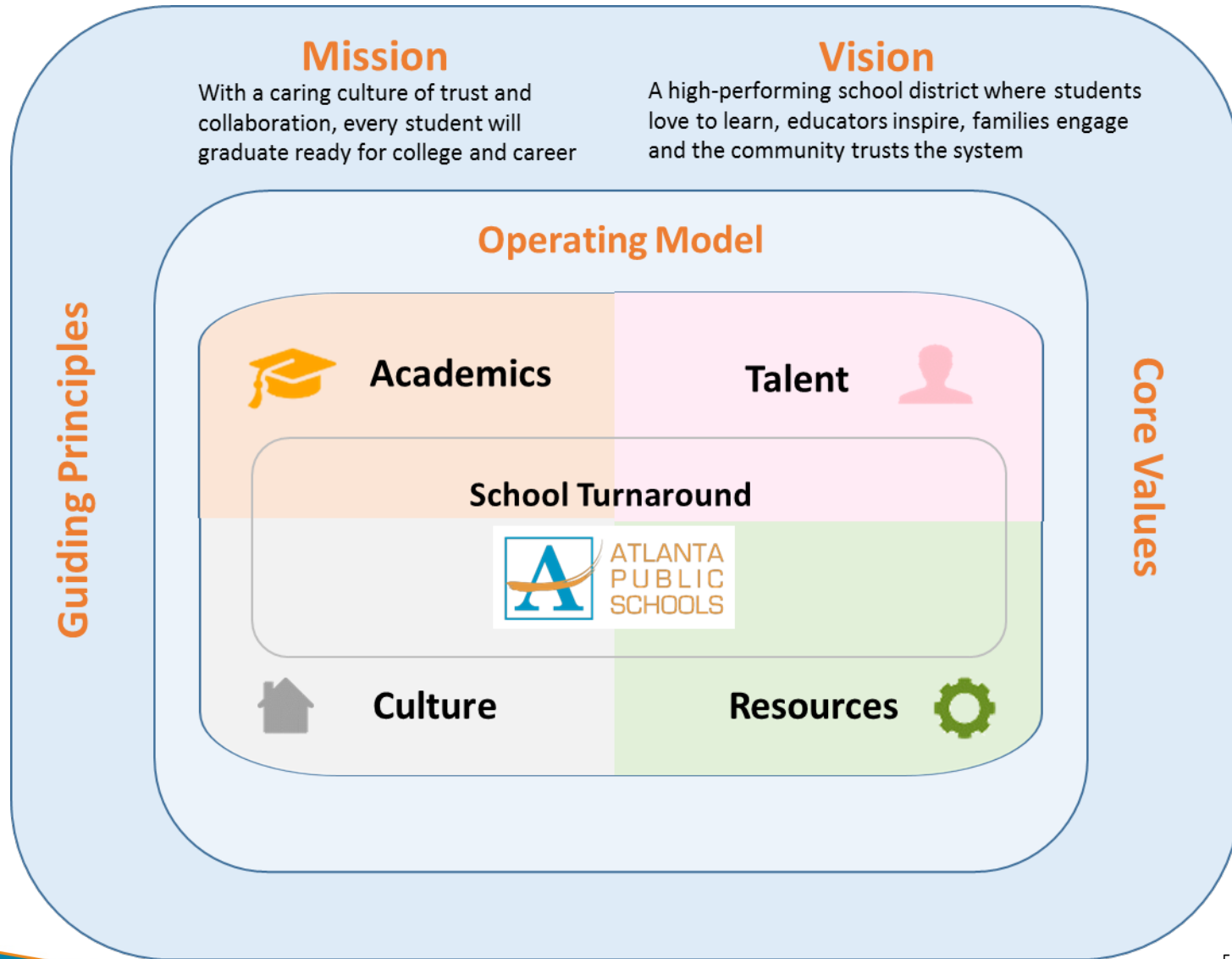
on a Journey of Transformation

STATE *of the* DISTRICT

We are now in full-scale implementation of our transformational framework. While the organization is stronger structurally, academic performance is mixed.



APS Transformation Framework

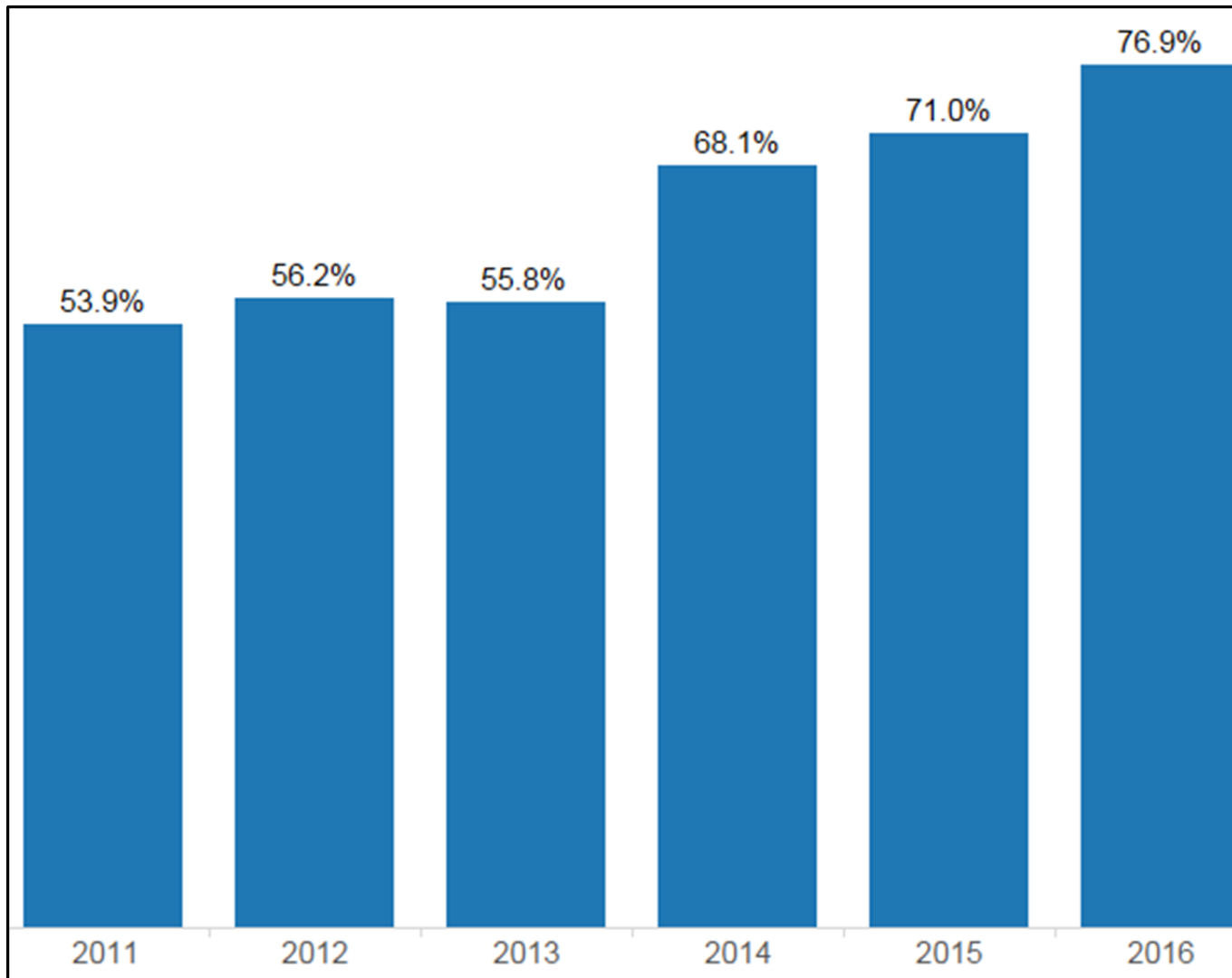


Jackson Cluster Performance – CCRPI

School	2014	2015	2016	Three-Year Average
Benteen ES	48.0	65.5	56.9	56.8
Burgess-Peterson Academy	78.4	74.3	80.5	77.7
D.H. Stanton ES	38.7	50.6	49.7	46.3
Dunbar ES	52.3	48.4	57.6	52.8
Parkside ES	59.9	69.3	68.7	66.0
Toomer ES	51.9	62.7	58.3	57.6
Whitefoord ES	63.9	48.9	62.0	58.3
King MS	65.4	59.1	57.4	60.6
M.H. Jackson HS	57.0	70.8	76.0	67.9

CCRPI = College & Career Ready Performance Index

Jackson HS Graduation Rate



Jackson Cluster IB Program Implementation

Apply for Candidacy ★ Consultant Visit ◆ Apply for Authorization ● Verification Visit ◻ Program Evaluation Visit ▲

Program	FY17	FY18	FY19	FY20	FY21
Jackson CP	Candidate School	◆	● ◻	▶	Authorized World School
Jackson DP	▶				Authorized World School
King-Jackson MYP	Candidate School	◆	● ◻	▶	Authorized World School
*Benteen PYP	Consideration ★	Candidate School	◆	● ◻	▶
Burgess-Peterson Academy PYP	Candidate School	◆	● ◻	▶	Authorized World School
*D.H. Stanton PYP	Consideration		★	Candidate School	◆ ● ◻
Dunbar PYP	Consideration ★	Candidate School	◆	● ◻	▶
Parkside PYP	Consideration ★	Candidate School	◆	● ◻	▶
F. A. Toomer PYP	Candidate School	◆	● ◻	▶	Authorized World School
Whitefoord PYP	Candidate School	◆	● ◻	▶	Authorized World School

*A merged Benteen/D.H.Stanton school, if approved would follow D.H. Stanton IB schedule.

Agenda

Welcome & Introductions

Purpose of Meeting

State of Cluster Summary

Proposal for School Changes in Jackson Cluster

Q&A

Historical Context for Conversation

Change

The Jackson Cluster has seen significant change over the last 15 years— including both increased school options and the removal of AHA public housing. These changes have resulted in under-enrolled traditional neighborhood schools that are financially inefficient and have shown mixed performance over time.

Concern

Community has expressed concern about consistent quality of PreK-12 experience within Jackson Cluster, particularly during middle school years.

Support

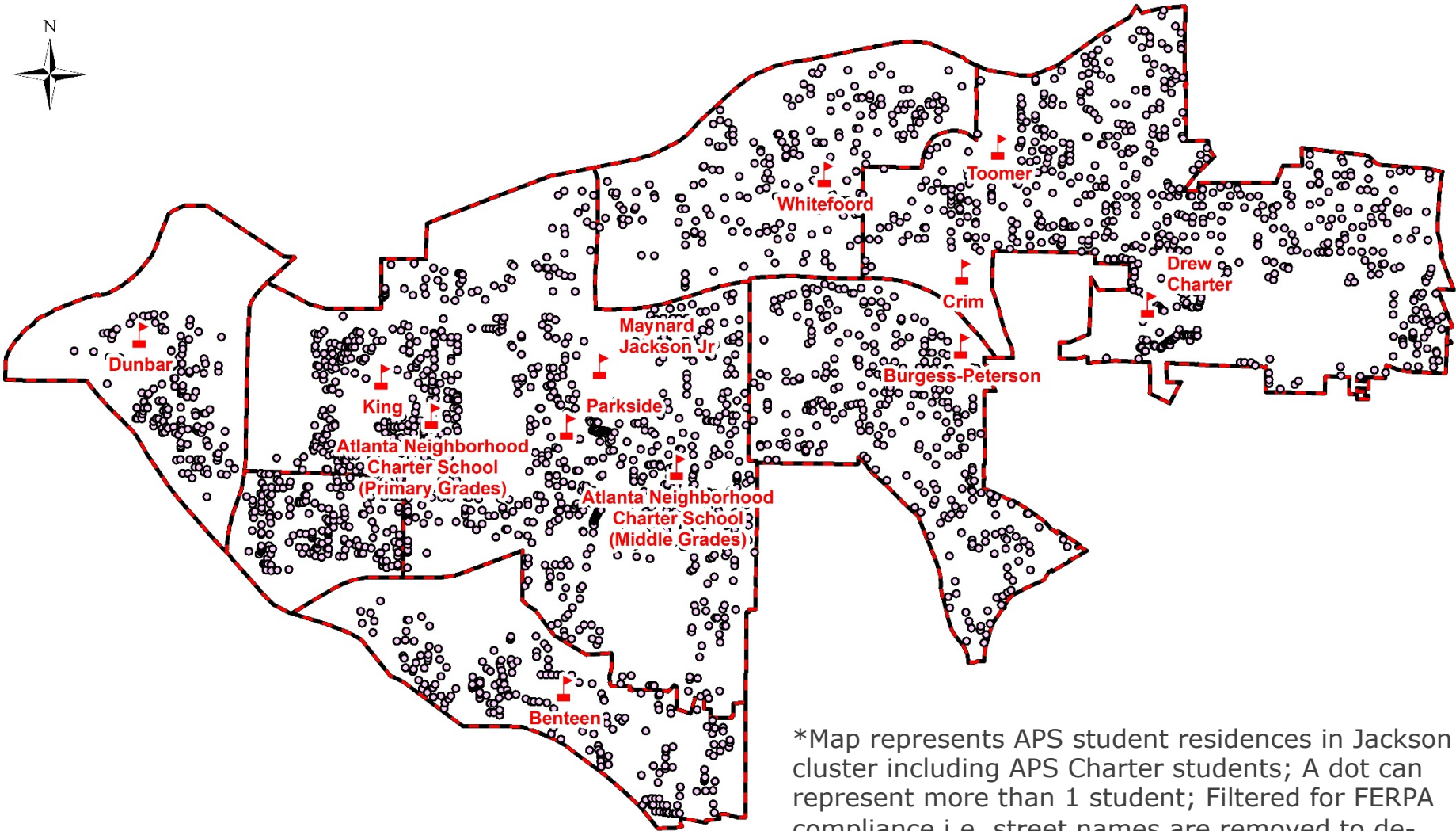
Community has requested additional support and investment to ensure new King MS is successful.

Solution

APS recognizes fatigue in community with changes that result in empty buildings without clear repurpose (i.e. Wesley Ave. ES* and Coan MS in Edgewood, East Lake ES in East Lake) and is committed to creating long-term, sustainable solutions.

*Former Ragsdale ES Relocation Site

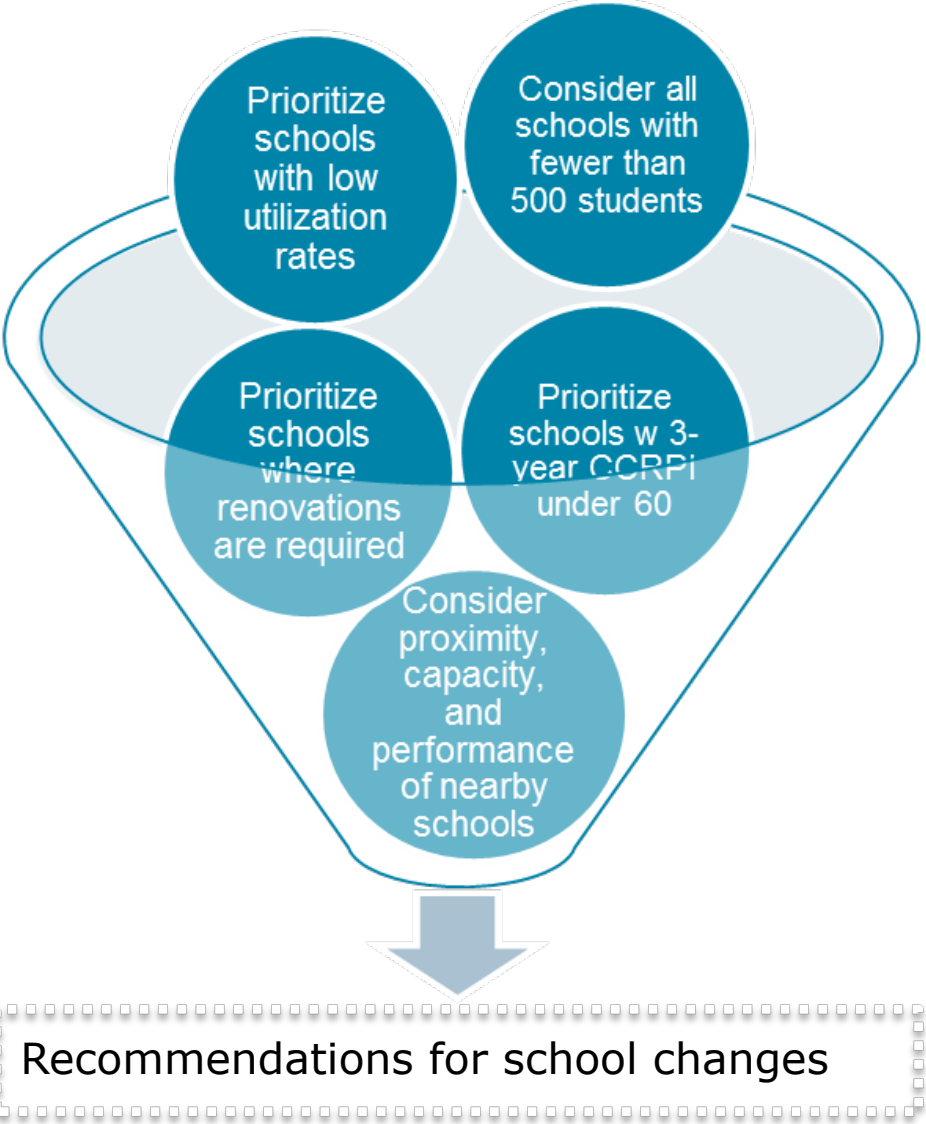
Student Locations in Jackson Cluster* 2016-2017



*Map represents APS student residences in Jackson cluster including APS Charter students; A dot can represent more than 1 student; Filtered for FERPA compliance i.e. street names are removed to de-identify data

Criteria for Any Recommended Changes

January 2016-Present



Proposal for Benteen/D.H. Stanton

Recommendation: Merge Benteen Elementary School and D.H. Stanton Elementary into a single school on the D.H. Stanton campus.

Staff: Consistent with past practices with *merged* schools, all staff from both Benteen and D.H. Stanton will be required to apply for a position at the newly merged school.

Zoning: Reset part of zone between Benteen and Parkside Elementary to align with neighborhood boundaries.

**Merger: Attendance zones of two or more schools are combined and consolidated into a single school.*

Closure: Attendance zones of a school is redrawn into attendance zone of one or more existing schools.

Rationale for proposal

Benteen Elementary, with 310 students, currently stands as one of the smallest elementary schools in APS.

Both Benteen and D.H. Stanton have significant capacity, but D.H. Stanton has a larger building. Also, a new Sheltering Arms Early Childhood Center will open this year to serve students from six weeks through PreK.

Newly merged school will qualify for these additional staff allotments and services:

- + 7.0 Core Teachers
- + 1.0 Expanded Core
- + 1.0 Paraprofessional
- + .50 Counselor
- + \$28,000 operating
- + \$5,000 substitutes
- + \$23,000 Flex Funds
- Gifted, EIP, ESOL, Special Ed, Nurse, Psychologist, and SSQ will also increase, but awaiting exact allotments.

Benteen/D.H. Stanton Enrollment Projections

School	Current Enrollment	Planning Capacity (@22 students/room)	Projected New 2017-18 Enrollment
Benteen ES	310	528	Merged
D.H. Stanton ES	265	726	583

Enrollment Projections for proposed merged school				
Grade	2016-17	2017-18	2018-19	2019-20
PK	54	54	54	54
K	95	99	94	90
1	76	99	103	98
2	90	77	100	104
3	82	92	79	102
4	93	78	88	75
5	85	84	71	79
Total	575	583	589	602

Staffing Implications for Benteen/D.H. Stanton

- The District developed school allocations and guidelines to help ensure that school-based programs are provided for all students adequately and equitably.
- Class sizes are not expected to change with mergers/closures
- For grades K through 5, the total projected enrollment by grade level is divided by the funding class size and then rounded up to the nearest whole number.

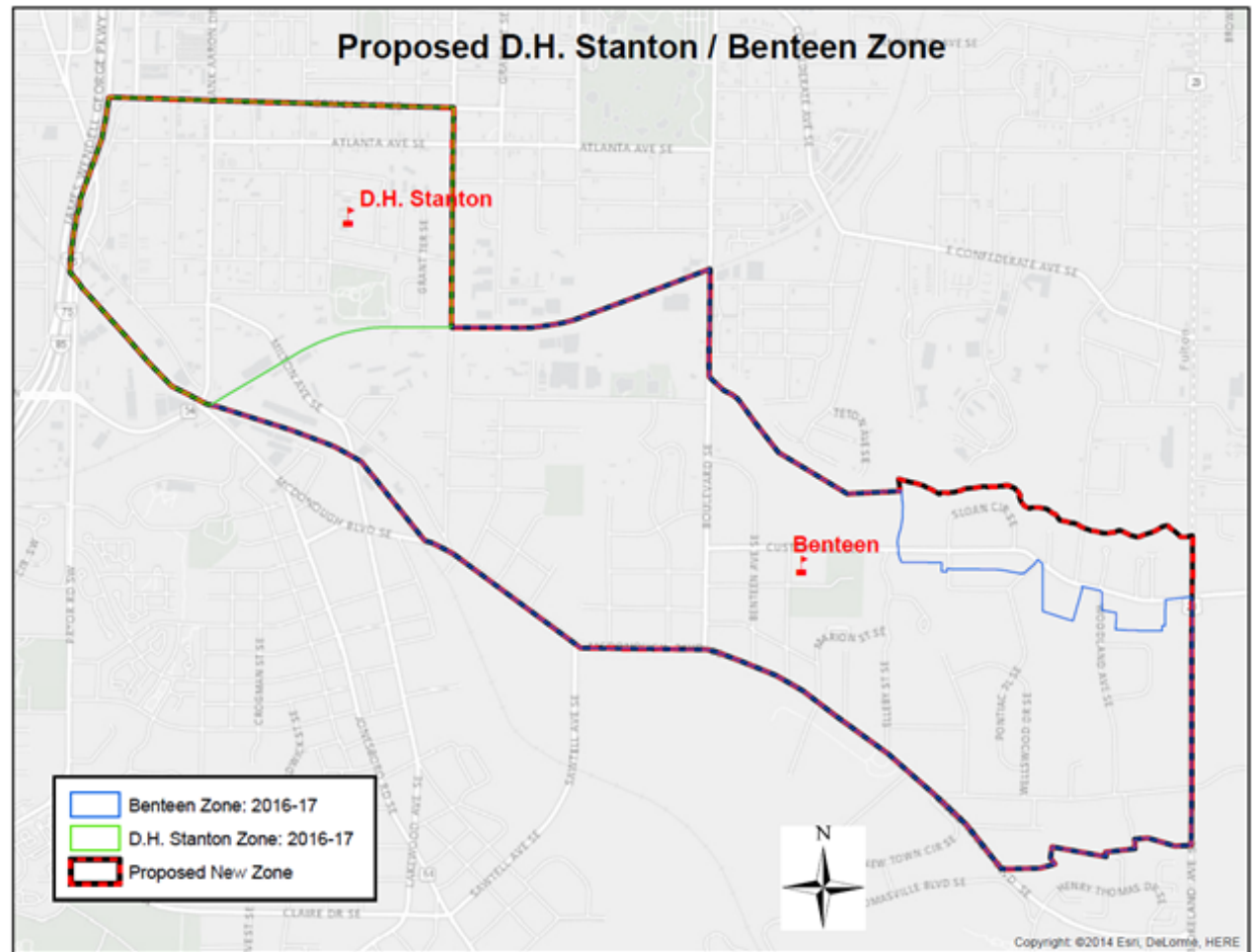
Grades	General Education Teacher Ratios
Regular Kindergarten with full-time Paraprofessional	1:25
First through Third	1:26
Fourth through Fifth	1:30

- The new school will qualify for additional staff allotments such as a full counselor and earn more allotments in extended core curriculum.

Expected Boundary Changes with Merger

As part of proposed merger, the district would reset part of the zone between Parkside Elementary and Benteen to align with neighborhood boundaries. Specifically, this affects a small portion of Custer/McDonough/Guice on the north side of Cluster Avenue, which would now become a part of the merged school zone. This provides consistent zoning, as all other neighborhoods within the Jackson Cluster had been zoned as a whole.

APS has connected with the small number of impacted families. Children within the former Parkside zone will be allowed to complete their elementary education at Parkside.



Proposal for Whitefoord/Toomer

Recommendation:

Address under-enrollment issues with Whitefoord and Toomer elementary schools.

Leading Option:

Close Whitefoord; redistrict students to Toomer Elementary and Burgess-Peterson Academy. Given community feedback about projected growth with young families, APS will partner with community to plan ahead and assess if new space planning is required.

Potential Alternative Option:

Merge Whitefoord and Toomer onto Coan MS campus for a new K-5 elementary school.

**Merger: Attendance zones of two or more schools are combined and consolidated into a single school.*

Closure: Attendance zones of a school is redrawn into attendance zone of one or more existing schools.

Rationale for Proposal

Whitefoord Elementary, with only 272 students, currently stands as one of the smallest elementary schools in APS

Toomer and Burgess-Peterson, both located in the Jackson Cluster within reasonable proximity of Whitefoord, have capacity to handle additional enrollments.

Based on district's extensive facilities assessment report from Nov. 2015, condition and suitability scores for buildings on the Whitefoord campus ranked among the lowest in the district. Estimates to restore the buildings to original state would exceed \$7 million.

Toomer is currently scheduled for \$4 million from SPLOST for select renovations Jan.–Jul. 2022

Rationale for Proposal

- In order for schools to hold healthy staffing ratios for full complement of services for families, an ideal elementary enrollment number is at least 500 students. Currently, Whitefoord is 228 students short and Toomer is 149 students short; therefore, neither school is close to target numbers for full services without merger or closure.
- Due to increased enrollment, both Toomer and Burgess-Peterson will qualify for additional staff allotments and core services.

Toomer:

+7.0 Core Teachers
+1.6 Extended Core
+1.0 Para
+1.0 School Clerk
+.50 Counselor
\$20,000 operating per pupil
\$3,500 subs per pupil
\$16,000 Flex Funds
Gifted, EIP, ESOL, Special Ed., Nurse,
Psychologist and SSW will also increase
but we are awaiting exact allotments.

Burgess:

+1.0 Core Teachers
+1.0 School Clerk
+0.2 Extended Core
\$6,000 operating per pupil
\$1,000 subs per pupil
\$4,800 Flex Funds
Gifted, EIP, ESOL, Special Ed., Nurse,
Psychologist, and SSW will also increase but
we are awaiting exact allotments.

Other Factors

Staff:

Various options come with differing staffing plans.

- *Leading Option:* District will support all employees from Whitefoord in finding other opportunities within the district as all positions will be abolished. Toomer and Burgess-Peterson staff will not be impacted.
- *Alternative Option:* Plan needs to be drafted, but historic practice requires all impacted staffs to re-apply.

Care Center/School-based Health Clinic:

District is working with Whitefoord Inc., the operator of the Whitefoord Elementary clinic, to explore relocation options if the school is closed so that Edgewood families can continue to access services.

After School/Early Childhood Programming:

District is also working with Whitefoord Inc. to determine approach to continued services for programs that currently exist at Whitefoord.

Empty School Buildings:

District will engage the Jackson Cluster community about the best use of any empty buildings, including the Coan MS building, to better serve the current student population and attract new families to APS.

Enrollment Projections

School	Current Enrollment	Planning Capacity (@22 students/room)	Projected New 2017-18 Enrollment
Whitefoord ES	272	572	Closed
Toomer ES	351	616	569
Burgess-Peterson	388	770	457

Enrollment Projections for proposed Whitefoord-Toomer			
Grade	2017-18	2018-19	2019-20
PK	57	57	57
K	97	100	102
1	78	97	100
2	98	80	99
3	85	97	79
4	74	82	94
5	80	64	71
Total	569	577	602

Staffing Implications for Whitefoord Closure

- The District developed school allocations and guidelines to help ensure that school-based programs are provided for all students adequately and equitably.
- Class sizes are not expected to change with mergers/closures
- For grades K through 5, the total projected enrollment by grade level is divided by the funding class size and then rounded up to the nearest whole number.

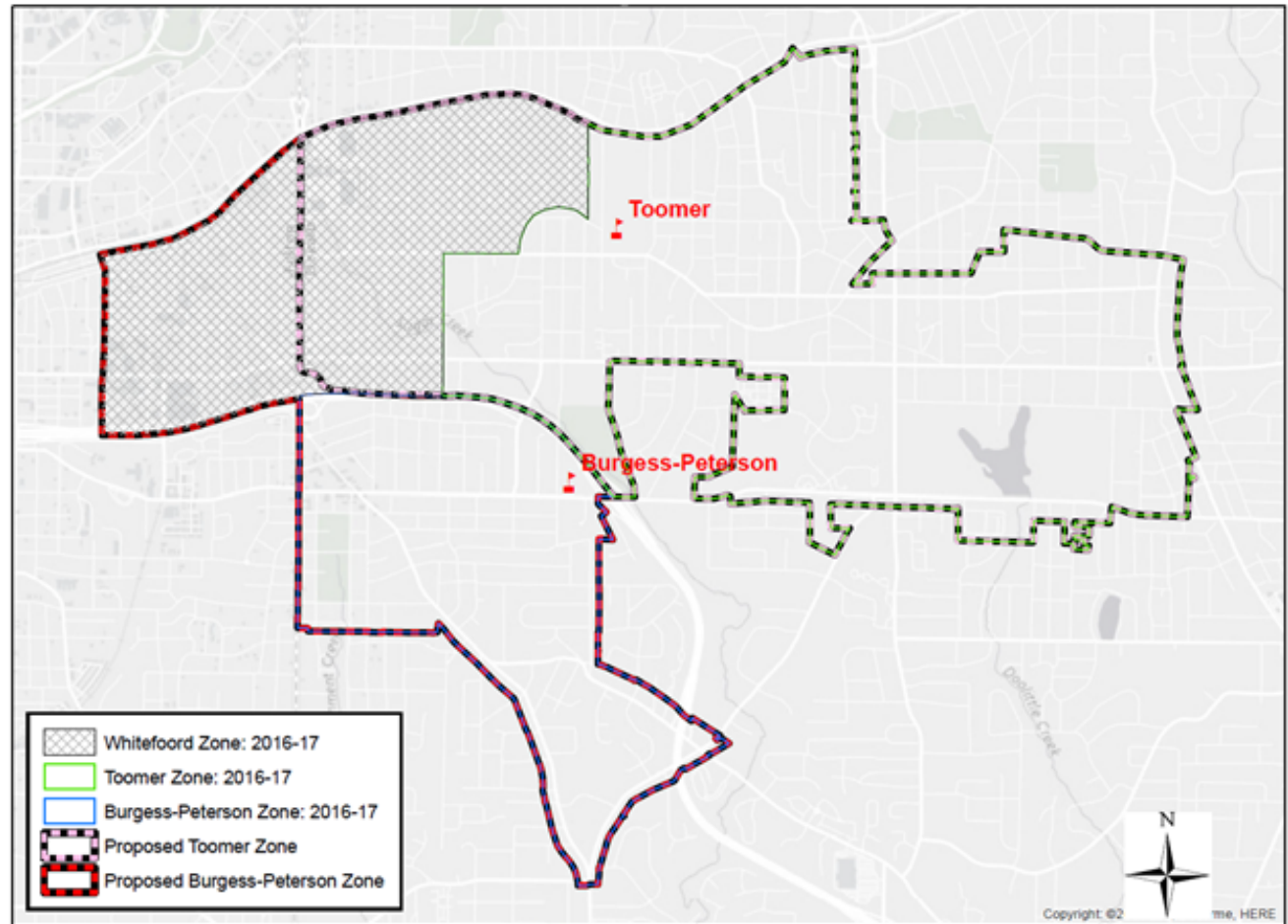
Grades	General Education Teacher Ratios
Regular Kindergarten with full-time Paraprofessional	1:25
First through Third	1:26
Fourth through Fifth	1:30

- Both Toomer and Burgess-Peterson will qualify for additional staff allotments and core services.

Proposed Boundary Changes

With the proposed closing of Whitefoord, Whitefoord students who live in the Edgewood community would attend Toomer ES; those in the Reynoldstown community would attend Burgess-Peterson Academy.

Proposed Toomer & Burgess-Peterson Attendance Zones



Task Force on Vacant Properties/Buildings

Task Force named on January 9, 2017 at Board of Education Meeting to examine APS vacant buildings and parcels to support affordable housing.

- Members:
 - *Bill Bolling*: Founder and former CEO, Atlanta Community Food Bank
 - *Catherine Buell*: CEO, Atlanta Housing Authority
 - *Andre Dickens*: Member, Atlanta City Council
 - *Hattie Dorsie*: Atlanta Neighborhood Development Partnership
 - *Jennifer Freeman*: Chair, Atlanta Planning Advisory Board
 - *Ryan Gravel*: Founder, Sixpitch
 - *Alan Lee*: AFSCME
 - *Keith Parker*: CEO and General Manager, MARTA
 - *Egpert Perry*: Integral Group Chairman and CEO
 - *Danny Shoy*: President of the East Lake Foundation
 - *Margaret Stagmeier*: Partner at Tristar Real Estate
 - *Nathaniel Smith*: Founder of Partnership for Southern Equity
- Charged with bringing recommendations to the Superintendent for consideration by June 2017
- Superintendent/Administration will continue to work on scenarios/options (including those unrelated to potential affordable housing efforts) for potential board action in fall 2017
- \$5 million in SPLOST is earmarked for management of vacant and dilapidated buildings

Jackson Cluster Timeline

Key Dates and Meetings

Jan. 17	Jan. 23	Feb. 15	March 1	March 6	March 7-10	March 7-24	April 1
Senior Cabinet leaders meet with Jackson Cluster staff about operating changes	Jackson Cluster Community Meeting	Jackson Cluster Public Hearing @ 6 p.m. at Whitefoord ES, 35 Whitefoord Ave. NE	Jackson Cluster Public Hearing @ 6 p.m. at Benteen ES, 200 Cassanova St. SE	Atlanta Board of Education votes on proposal @ 6p.m. at CLL 130 Trinity Ave SW	HR Team meets with staff at impacted schools.	Principal conducts Interviews and hiring process.	All staff members will be notified of their employment status.

Q&A

**What
questions
or ideas
do you have?**



APPENDIX

Enrollment Projections Data Sources/Process:

- BASE: Current FTE-1 Enrollment
- Analyze Historic Trends by School and Grade
- Analyze U.S. Census data on different age groups
- Review New Residential & Non-Residential* Permits issued by City; Estimate impact on schools
- Consider Approved Administrative Transfers
- Review Grandfathering Decisions due to rezoning
- Compare FTE-1 (October) and FTE-3 (March) to look for schools that gain or lose significant number of students during the school year.

Non-Residential Permits can include new transportation locations, shopping centers, new locations that offer employment, etc.